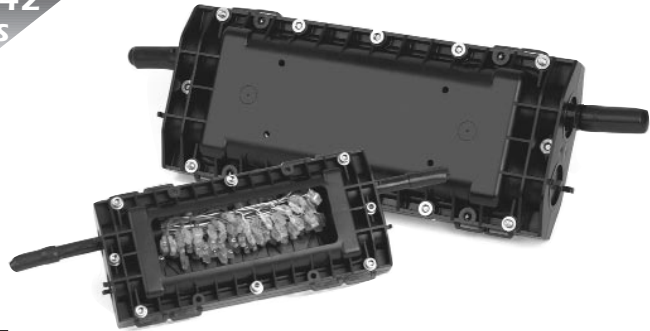


# IN-LINE SPLICE CLOSURES

Channell's range of In-Line Closures offer a fast, reliable and economical means of jointing copper cables in above or below grade applications.

40/41/42  
Series



## SPECIFICATIONS

### Jointing Capacity and Cable Size

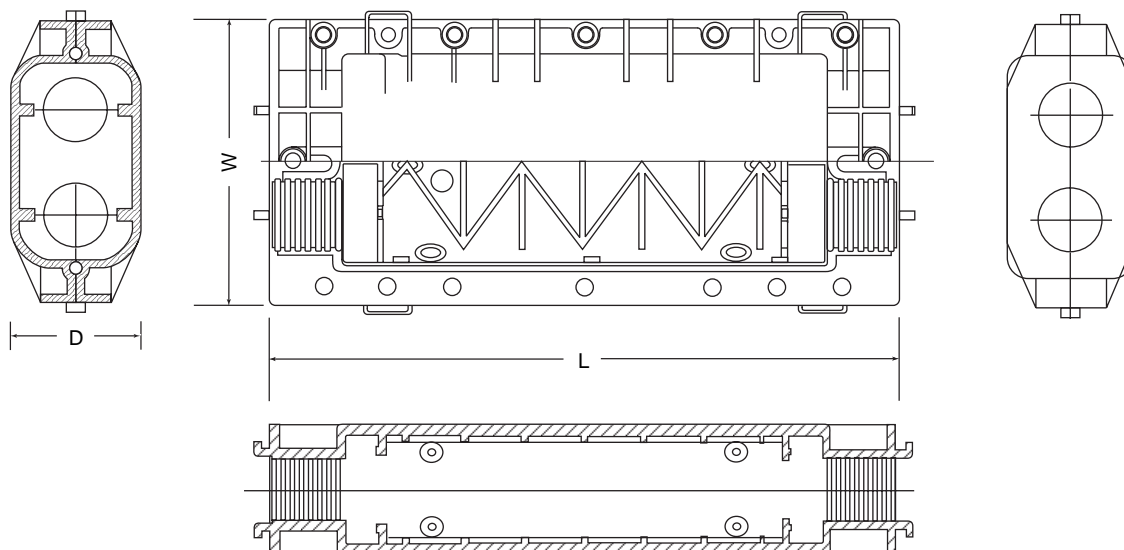
| Closure | Capacity (pair) | Min. Cable Diameter | Max. Cable Diameter |
|---------|-----------------|---------------------|---------------------|
| 40      | 50              | .157" (4mm)         | 1.023" (26mm)       |
| 41      | 100             | .551" (14mm)        | 1.260" (32mm)       |
| 42      | 200 *           | .787" (20mm)        | 1.772" (45mm)       |

\*400 pair using 25 pair FS2 connector

All Channell inline copper closures meet international standards for cable splicing, and have been qualified by independent accredited testing authorities worldwide. Complete electrical, environmental and mechanical performance tests have been performed. Detailed results and test procedures are available from Channell upon request.

| Closure | Length         | Width         | Depth        |
|---------|----------------|---------------|--------------|
| 40      | 10.63" (270mm) | 5.12" (130mm) | 2.17" (55mm) |
| 41      | 13.78" (350mm) | 6.10" (155mm) | 2.76" (70mm) |
| 42      | 17.72" (450mm) | 8.07" (205mm) | 3.35" (85mm) |

| Closure | Shipping                     | Weight                   |
|---------|------------------------------|--------------------------|
| 40      | 1 per carton, 276 per pallet | 2.7 lbs (1.25 kg) carton |
| 41      | 1 per carton, 132 per pallet | 3.9 lbs (1.8 kg) carton  |
| 42      | 1 per carton, 72 per pallet  | 7.7 lbs (3.5 kg) carton  |



## FEATURES

- Extremely robust construction
- Fast installation times
- Above or below ground installations
- Three levels of sealing, pressurized, water tight, free breathing
- UV and chemical resistant co-polymer
- Slimline construction
- No specialty tools for assembly
- Reduced training cost for installation
- No heat required for sealing
- Built in fastening points including catenary and wall mount
- Three capacities

## ORDERING INFORMATION

### 3

#### EASY STEPS:

- ❶ Determine Wire Size and Maximum Pair Count
- ❷ Select Corresponding Unit Configuration
- ❸ Specify Desired Accessories

| Part Number | Description                    |
|-------------|--------------------------------|
| 130020      | 40 Series copper submersible   |
| 130021      | 40 Series copper watertight    |
| 130022      | 40 Series copper freebreathing |
| 140032      | 41 Series copper submersible   |
| 140036      | 41 Series copper watertight    |
| 140037      | 41 Series copper freebreathing |
| 150032      | 42 Series copper submersible   |
| 150037      | 42 Series copper watertight    |
| 150038      | 42 Series copper freebreathing |
| 180089      | 40 Series re-entry kit         |
| 180104      | 40 Series mounting kit         |
| 180105      | 40 Series thimble kit          |
| 180106      | 40 Series washer kit           |
| 180092      | 41 Series re-entry kit         |
| 180108      | 41 Series mounting kit         |
| 180109      | 41 Series thimble kit          |
| 180110      | 41 Series washer kit           |
| 180094      | 42 Series re-entry kit         |
| 180111      | 42 Series mounting kit         |
| 180112      | 42 Series thimble kit          |
| 180114      | 42 Series washer kit           |
| 190319      | Earth continuity lead          |
| 190326      | Earthing point                 |
| 290026      | Pressure valve assembly        |