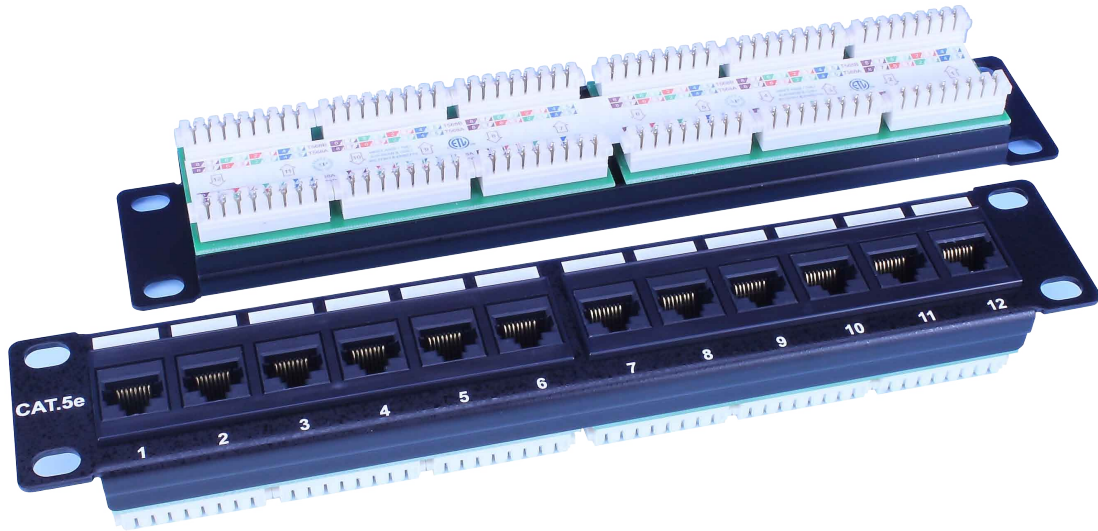


ON-EPLEN-120X C5e Horizontal 10"-1U Patch Panel, EN Type, UTP, 12 Ports



Electrical Specifications

- Insulation Resistance : 500M ohms (min.)
- Contact Resistance : 20m ohms (max.)
- Current Rating : 1.5 Amps.
- DC Resistance : 0.1 ohms (max.)
- Withstanding Voltage : 100 VAC RMS @ 60Hz / 1 min.

Mechanical Specifications

- IDC Punch Down Cycle : Over 250 Cycles (min.)
- Jack Inserter Cycle : Over 2000 Cycles (min.)
- Operation Temperature : -40°C ~ +70°C

Performance

Meets C5e EIA/TIA 568B Standard

Materials

Front Plate	Fireproof ABS UL-94V0
Panel	Metal (SPCC)
Jack	8P8C 50 micro inches gold plated
PCB	FR-4 / UL-94V0
IDC Body	Fireproof ABS UL-94V0
IDC Pin	Bronze & Tinned
IDC Description	For 22-26AWG. For 110 or Krone punch-down Tool