



CHANNELL

Where The Industry Connects.

Digitap

INTERMODULATION SPLITTER
MODEL 1002EN/030CTE

5dB CE 3.5dB

Where The Ind

Since 1922, Channell has been pioneering technology to help the telecommunications industry set new standards of excellence. From inventing creative new products for the telephone company in the 1920s to the development of the most complete line of broadband enclosures in the industry, Channell has established itself as a world leader with a full range of outside plant equipment. Today, we continue in this tradition while embracing new opportunities as the imminent convergence of several related industries becomes a reality.



Poised on the brink of a new era.



The explosion of broadband services and the importance of telecommunications in an information-based global economy have made outside-plant network integrity more crucial than ever. The creation of advanced communications networks has become a national priority worldwide. So how does Channell fit in? We help get networks up and running faster. Our durable products not only create the connection, but ensure network integrity and reduce maintenance costs as well.



Industry Connects.

In today's fast-paced world, companies are looking for service that's just as reliable as an uninterrupted signal delivery. Which is why they turn to Channell.

Because they know Channell can provide a totally integrated outside-plant package, from signal origination to delivery to the customer. And they know we'll deliver everything we promise.

We offer a full range of products, including enclosures, copper connectivity, fiber optics, RF electronics and heat shrink products. We simplify the decision making process for our clients by providing complete outside plant solutions. We ensure they meet their growth objectives by offering global manufacturing, product development and field support to service any network architecture. Which is why GTE and Pacific Bell have depended on us for the past 40 years. And AT&T, Telstra, Time Warner, Cable & Wireless, Alcatel, Ericsson, Singapore Telecom and Telefonica look to us for reliable innovations. You see, we're committed to excellence in everything we do. Excellence in our products. Excellence in our technology. And excellence in our customer service. This commitment built our business, and it's certain to carry us into the future.



Complete Solutions



BROADBAND

As a pioneer in outside plant infrastructure, we have the experience and vision needed for unique, high-performance products that support broadband network services. Channell enclosures provide unrivalled heat dissipation performance, which is crucial for network reliability.

After all, broadband is the hottest market in the world today in more ways than one. We offer complete, high-security cable management to ensure network integrity, including CATV and Broadband enclosures with Heat Dissipation Covers (HDC™) for active electronics. Customized Rhino Metal enclosures to fit multiple applications such as power and fiber nodes. RF splitters that set a new RF performance standard for digital service. And DigiTap splitters and taps for unrivaled intermodulation and port-to-port isolation. Everything you need for the highest quality coax and fiber connectivity.

TELEPHONY

We can help you take your network to the next level with across-the-board high-performance copper and fiber connectivity.



ons Connected.



Searching for innovation? Look no further. Our Mini-Rocker™ is the best overall copper connectivity system in the industry. The new FlexPed™ and MAH Series enclosures meet the most stringent outside-plant network requirements.

And our GLBs™, BMTs and dome closures, which offer cable management packages for below grade systems, are setting new standards for sub-surface applications.

Our highly reliable range of Insulation Displacement Connector (IDC) products include discrete and modular connectors that are used extensively worldwide in copper primary and secondary networks.

UTILITY

Nothing is more important than network reliability and innovation – especially with the onset of deregulation and new market opportunities.



Channell's power pedestal housings, heat shrink products and GLBs provide excellent long-term performance for power delivery applications. The range of heat shrinkable products covers both terminations and cable joints with system voltages ranging from 1.1 Kv through 36 Kv. And our power enclosures provide rugged, high-security protection for both above-ground and sub-surface networks. When matched with our complete line of telecommunications products, Channell offers complete solutions to help you become more competitive as your services expand.



Innovation and Tec



How does Channell make a good idea fly?

At Channell, we are constantly evolving our products to better answer the changing needs of the industry. We have a product development team devoted to customizing our products and creating new solutions to meet the unique requirements of each network application. Our research and development team is ready to assist with any challenge. We also believe it is vital to have a select sales and customer service team; individuals dedicated to meet the needs of each client. Our salespeople are completely versed in Channell's entire line of products. And they are better equipped to offer true solutions and help protect network integrity. Once your requirements are defined, a product development team will design the actual product. Through collaboration with our engineers, technical specialists and product marketing managers, we can quickly bring new products to market.

We envision what you need to succeed.

Our product development process begins with a comprehensive understanding of the application and your unique requirements. We find out what you need based on factors such as your network parameters, location, market and specifications. After we've determined your requirements, our team converts your wish-list into a product concept,



Technology Connected.



visually displayed in 3-D via a computer-aided design (CAD) program. From here, we can create a prototype using a state-of-the-art modeling machine that's integrated with our CAD system. So, when you're satisfied with what you see on the computer screen, we can create a model to verify your design specifications.

And we turn it into a reality

After a final design is selected, we proceed to the manufacturing phase and ramp up for full production. With Channell facilities all over the world, we believe you should have the home field advantage. Much of our manufacturing is completed locally. We receive the raw materials and produce the product ourselves. We rely on the most technologically advanced tooling and manufacturing equipment to ensure quality. Our highly skilled manufacturing personnel are trained to produce the finest products in the industry. We oversee the entire manufacturing process ourselves. And as part of our ISO 9000 certification, all of our processes are well documented. So, if any problems should arise, our team can quickly step in to resolve them. We'll continue to assist you after your product reaches the end of the assembly line by expediting distribution and support in the field. If you've got a big idea, we'll help you make something of it.



Enclosures.



When you're in the market for enclosures, there are three basic questions that should be top of mind. How will they protect my equipment? How will they last? How will they look?

Channell enclosures. Protect your network.

Channell offers a full line of thermoplastic and metal enclosures, covering a full spectrum of sealed, free-breathing copper, fiber and active electronics applications. We also design broadband telephony and power packages for below-grade, above-ground and network applications.

If your business is heating up with broadband active electronics, we recommend our broadband enclosures with Channell's patented Heat Dissipation Covers (HDC™). These enclosures optimize heat dissipation to improve the reliability and service life of your network electronics. We also offer a line of broadband enclosures for passive electronics designed to protect broadband equipment and properly manage connectors and cable types used internationally, either above or below ground. Our power pedestal housings offer exceptional advantages for power utility networks.

For the telecommunications industry, we manufacture airtight and watertight enclosures, including our innovative CPT sealed pedestal enclosures and the industry standard BMT Series which supports a full range of sub-surface copper cable management applications. Our SUH series supports similar subsurface applications for broadband coax networks.



Connected.



When matched with our full line of grade level boxes, a complete subsurface system can be created to satisfy the unique requirements of our customers.

Our Rhino Metal enclosures are designed in a modular fashion, supporting a multitude of network applications. The sizes and features of this cabinetry can be configured to package any application with a variety of features and options.

Channell enclosures. Built to last.

Our rugged enclosures provide maximum security and resistance to environmental

contaminants. We also offer a full line of airtight and watertight enclosures to protect your equipment from the ravages of water, chemicals, and corrosion. Our metal fabricated enclosure components are also available with our innovative finishing technology – Thermal Laminating Powder Coat (TLPC) – CCC fusion epoxy coating. And to prevent tampering or vandalism, many of our enclosures feature our Self-Lock™ System.

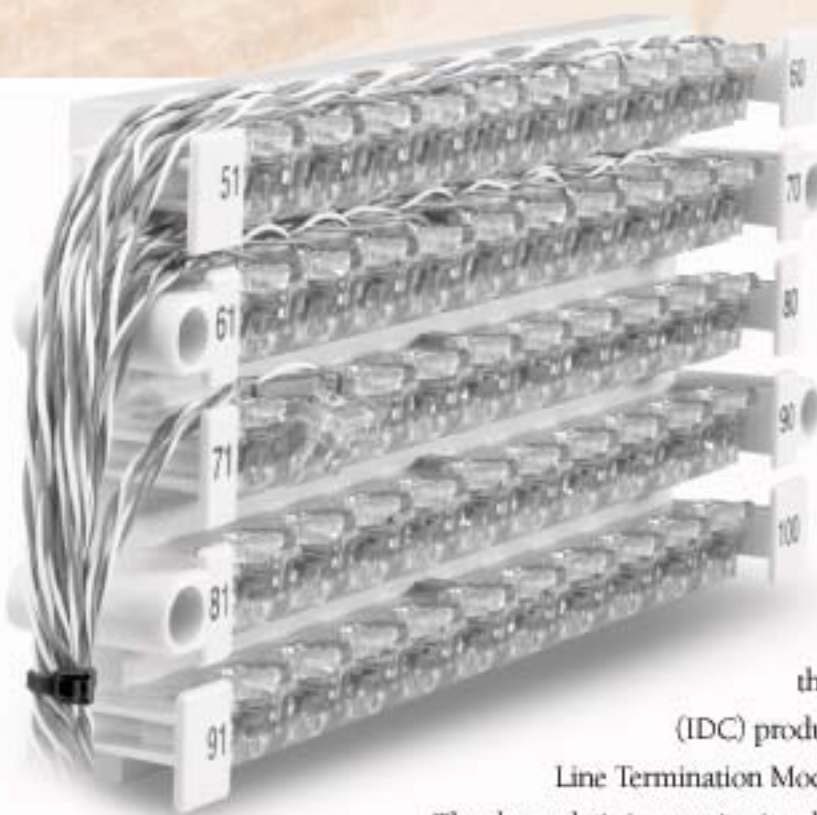


Channell enclosures. First-class looks and performance.

How will your enclosures look? That's entirely up to you. You can choose from a variety of styles, configurations and colors to meet your unique requirements. While we offer a variety of enclosures that are readily available, we can also custom design them specifically for your company and its applications. After all, an enclosure should reflect well on your brand name. When it comes to enclosures, we have your entire network covered.



Copper Connect



No matter how advanced your network components become, copper will continue to have a presence in DSL technology as well as the most robust fiber-in-the-loop networks. Without solid copper cable management, your network's integrity could be severely compromised, resulting in increased maintenance costs and reduced network performance.

Automatically terminated. Data ready.

Channell offers you more ways to stay reliably connected through our family of insulation displacement connector (IDC) products, which include Discrete Connectors, Terminal Blocks, Line Termination Modules and our flagship Mini-Rocker connector system.

Thanks to their innovative insulation displacement technology, wire is automatically terminated and environmentally sealed, eliminating

potential weak links. What's more, most of our product line is Category 5 rated to ensure that your network will be up to speed across the board.

With Channell's IDC Discrete Connectors, you'll have a wide selection of high-performance connectors available at a moment's notice. Our field-proven, world-deployed Rocker Block is still an industry standard. And we continued to build on this technology through our Mini-Rocker



ivity. Connected.

system with its compact size, ease of use, flexibility and pair-at-a-time capabilities. It's also available with a complete line of accessories and in many configurations for a wide range of network applications. No other IDC system available can rival the Mini-Rocker's convenience and performance.

Our patented, next-generation terminal blocks are more than just a connector between distribution cable and drop wire in the local loop. They feature a family of personality modules that allow flexibility in providing circuit isolation, protection and line-test electronics as these upgrades are needed in the field.



the water immersion tests with flying colors, which many competing products fail. Built to endure, all our IDC products provide unrivaled gas-tight and waterproof connections. When you consider a future of trouble-free service in both internal and external plant installations, Channell is without a doubt your best connection in the business.

Reliably sealed.

Moisture. Corrosion. Vibration. Our entire IDC product line withstands them all. For example, our Mini-Rocker can handle up to 250 reterminations without fear of failure, far more than most units should see in a lifetime. And it passes



Fiber Optics.

As an expert in the local loop, our new line of fiber products is focused on emerging leading-edge applications. Now Channell can offer you a complete outside-plant fiber-management solution.

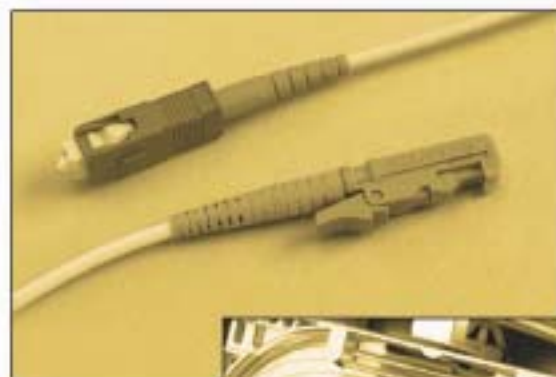
Designed to be versatile.

We offer fiber splice enclosures for high-fiber count applications, including single circuit management configurations. With the flexibility of aerial, pedestal and underground products, these enclosures are designed to help you meet the growing demand for low-cost, reliable fiber-optic splicing. They are designed for vault, loop, node and ONU splice applications. And all our fiber optic enclosures meet or exceed all industry requirements.

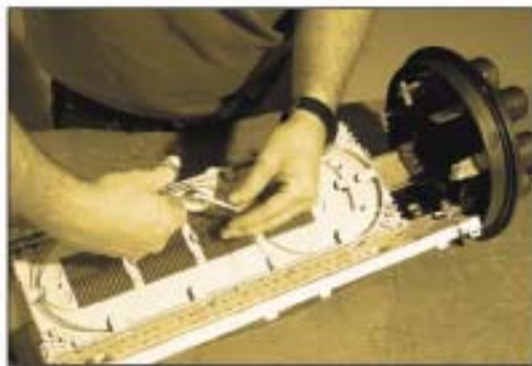


Durable and craft-friendly, Channell's family of fiber-optic closures guarantee long-term reliability and clarity of voice, video, and data signals throughout your entire network. Available in a range of sizes, our closures can comfortably accommodate unitube, loose-buffer tube, ribbon, dielectric, shielded, fire-retardant, and optical ground wire (OPGW) cables for single-fusion, single-mechanical, mass-fusion or mass-mechanical splicing.

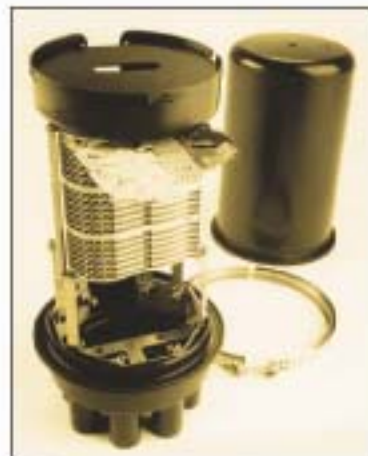
Our fiber optic closures accept a broad range of cable diameters through pre-molded ports, minimizing preparation during installation. Side-hinged trays provide easy access and versatile storage of splices, ensuring that fibers are fully



Connected.



restrained and protected. Plus, there's ample room for storing slack fiber while maintaining bend radii that will maximize long-term optical performance. To complement this versatility, a family of accessories is available to tailor your fiber-optic closure to specific application requirements.



Designed to last.

First and foremost, we made sure our closures are strong enough to withstand cable shear or pull-out. We can deliver gas-tight and watertight seals with field-proven heat-shrink or grommet technologies. An optional built-in air valve allows flash testing to ensure a reliable seal. To ensure the integrity of our closures, we use flame-retardant, chemical-resistant, impact-resistant and UV stabilized materials.

Designed to be flexible.

Nothing you design today is set in stone. With Channell's fiber-optic products, you can easily change or upgrade your networks. Our custom designed interconnect hardware and performance fiber-optic cable assemblies offer unique solutions for the most complex fiber cable management applications. And since our fiber-optic products are compatible with your enclosures and broadband components, your network will be more efficient. So, if you're ready to grow, Channell can help you reach the next plateau.



Heat Shrink.



At Channell, we implement the most advanced material science technologies for our heat shrink products. We go to extraordinary measures in our laboratory to meet the most stringent requirements of field installations. We formulate and compound materials in-house to ensure the highest level of protective covering for your cable management system.



Fit for anything.

Our specifically formulated materials provide protection from environmental extremes as well as chemicals and solvents. Designed to bond with your components, they ward off environmental pitfalls such as corrosion, abrasion and stress cracks. They also provide excellent electrical insulation for low- and medium-system voltages of power. High shrink ratio sleeves and tubes are used extensively to support our telecommunications portfolio of cable joints and enclosures. Their high tensile strength can withstand continuous operating temperatures ranging from 55° to 120°C.



Connected.

Equipped for anything.

You're looking for a way to connect miles of cable and network terminations. We offer you several. Our low- and medium-voltage families of heat-shrink products consist of end caps, anode caps, cable breakouts and rain sheds. We also have cable sealing glands, molded shapes, end caps, wall tubing, power-jointing kits and terminations. These products fit cable or pipe diameters ranging from 3mm to 52mm. Plus, our wide shrinkage range means fewer sizes are required.



When you consider everything that Channell's heat shrink products have to offer, it's easy to see why we're the worldwide leader in molded shapes. With manufacturing plants and sales offices around the globe, we have the solutions to meet your energy and telecommunications needs.



Globally

www.chann

Corporate Headquarters

Channell Corporation
Temecula, CA
tel: 909.719-2600
fax: 909.296-2322



Regional Operations Centers

USA

Channell RF Products Group
Charlotte, NC
tel: 704.388-4008
fax: 704.388-2004

Mexico

Channell De Mexico, S.A. De C.V.
Mexico City
tel: 52.5537-41539
fax: 52.5537-41540

Canada

Channell Canada Inc.
Toronto, Ontario
tel: 905.565-1700
fax: 905.565-8080



Connected.

ellcomm.com



United Kingdom
Channell Ltd.
London, UK
tel: 44.1689 871522
fax: 44.1689 833428



Malaysia
Channell SDN.BHD
Kuala Lumpur
tel: 60.3 6120 2055
fax: 60.3 6120 2051

Australia
Channell Pty Ltd
Sydney, New South Wales
tel: 61.2 9738 8277
fax: 61.2 9738 9763





CHANNELL

Where The Industry Connects.

Corporate Headquarters

Channell Corporation

26040 Ynez Road • P.O. Box 9022 • Temecula, CA • USA • 92589-9022

www.channellcomm.com

©2002 Channell Corporation. Printed in the U.S.A. 1000/206.